



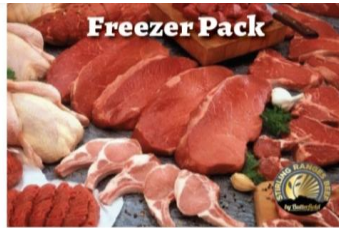
PACK LIST



COUPLES PACK

\$140.00

- | | | | |
|-------|-------------------------------------|-------|--------------------------------|
| 2 | SRB SIRLOIN STEAKS (250GM EACH) | 1KG | SRB RUMP STEAK |
| 1KG | SRB TOPSIDE MINCE | 800GM | BBQ STEAK |
| 1.2KG | SRB ROAST (PLAIN OR MARINATED) | 1.8KG | LAMB LEG ROAST |
| 6 | GOURMET SRB SAUSAGES | 1.2KG | CHICKEN BREAST |
| 6 | LAMB LOIN CHOPS | 1 | WHOLE CHICKEN |
| 500GM | CRUMBED SCHNITZEL (BEEF OR CHICKEN) | 12 | SRB BBQ SAUSAGES |
| 800GM | SRB STIRFRY STRIPS | 2KG | SRB MINCE |
| 2 | CHICKEN KIEVS | 1KG | LAMB LOIN CHOPS |
| | | 800GM | LAMB FOREQUARTER CHOPS |
| | | 1.8KG | SRB ROAST (PLAIN OR MARINATED) |
| | | 1KG | PORK LOIN CHOPS |



FREEZER PACK

\$260.00



RQM RESTAURANT AT HOME PACK

\$285.00

- | | |
|----|----------------------------------|
| 8 | SRB SCOTCH FILLET STEAKS |
| | <i>MINIMUM WEIGHT 230GM EACH</i> |
| 8 | SRB SIRLOIN STEAKS |
| | <i>MINIMUM WEIGHT 230GM EACH</i> |
| 6 | SRB FILLET STEAKS |
| | <i>MINIMUM WEIGHT 160GM EACH</i> |
| 12 | CHICKEN BREAST BONELESS SKINLESS |
| | <i>MINIMUM WEIGHT 200GM EACH</i> |

WEEKLY PACK

\$190.00

- | | | | |
|-------|-------------------|---------|---------------------|
| 1KG | SRB RUMP STEAK | 2KG | SRB RUMP STEAK |
| 1 KG | SRB MINCE | 3KG | SRB MINCE |
| 1.5KG | CHICKEN BREAST | 3KG | CHICKEN BREAST |
| 1.8KG | LAMB LEG BONE IN | 1.8KG | LAMB LEG BONE IN |
| 1EACH | RQM BURGER DEAL | 1X | RQM BURGER DEAL |
| 1.5KG | CHICKEN SCHNITZEL | 1.5KG | CHICKEN SCHNITZEL |
| 1 KG | LAMB LOIN CHOPS | 1PACKET | BBQ SAUSAGES |
| | | 1PACKET | THICK PORK SAUSAGES |

FORTNIGHTLY PACK

\$250.00

BULK PACK

\$540.00

- | | |
|---------|---------------------------|
| 5KG | SRB RUMP STEAK (5 x 1Kg) |
| 5KG | SRB MINCE (5 x 1Kg) |
| 5KG | CHICKEN BREAST (5 x 1Kg) |
| 3KG | LAMB LOIN CHOPS (3 x 1Kg) |
| 1.8KG | LAMB LEG BONE IN |
| 1.8KG | SRB ROAST (PLAIN) |
| 2X | RQM BURGER DEAL |
| 1KG | HONEY SOY CHICKEN WINGS |
| 1KG | BUFFALO CHICKEN WINGS |
| 2PACKET | BBQ SAUSAGES |

RQM BURGER PACK

\$26.95

- | | | | |
|---|-----------------------------|-------|-------------------------------------|
| 6 | SRB CHUCK & BRISKET BURGERS | 1KG | SRB MINCE |
| 6 | HI MELT CHEESE SLICES | 21 | SRB BBQ SAUSAGES |
| 6 | IL GRANINO POTATO MILK BUNS | 1KG | CRUMBED SCHNITZEL (BEEF OR CHICKEN) |
| | | 800GM | BBQ STEAK |
| | | 800GM | LAMB FOREQUARTER CHOPS |
| | | 1KG | CHICKEN DRUMSTICKS |
| | | 1KG | SRB DICED STEAK |

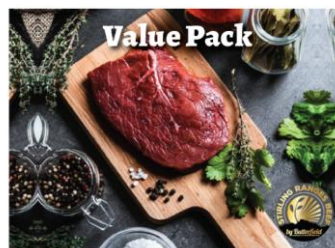
FAMILY VALUE PACK

\$120.00

RQM SLIDER PACK

\$22.95

- | | |
|---|-----------------------------|
| 9 | SRB CHUCK & BRISKET SLIDERS |
| 6 | HI MELT CHEESE SLICES |
| 9 | IL GRANINO POTATO MILK BUNS |



Metro: 22 Biscayne Way, Jandakot WA 6164 | **PO Box** 3552 Success WA 6964 | **T** (08) 9414 9200 | **E** accounts@ryansqualitymeats.com.au

Southwest: 17 Palmer Crescent, Davenport WA 6230 | **T** (08) 9725 7246 | **E** reception.bunbury@ryansqualitymeats.com.au

ABN 63 307 056 047